



The Perfect Day Initiative





One day at a time

Perfect Day is an initiative that moves away from the traditional mindset of health and safety, to a dynamic and positive approach that is focused on delivering excellence in safety performance one day at a time.

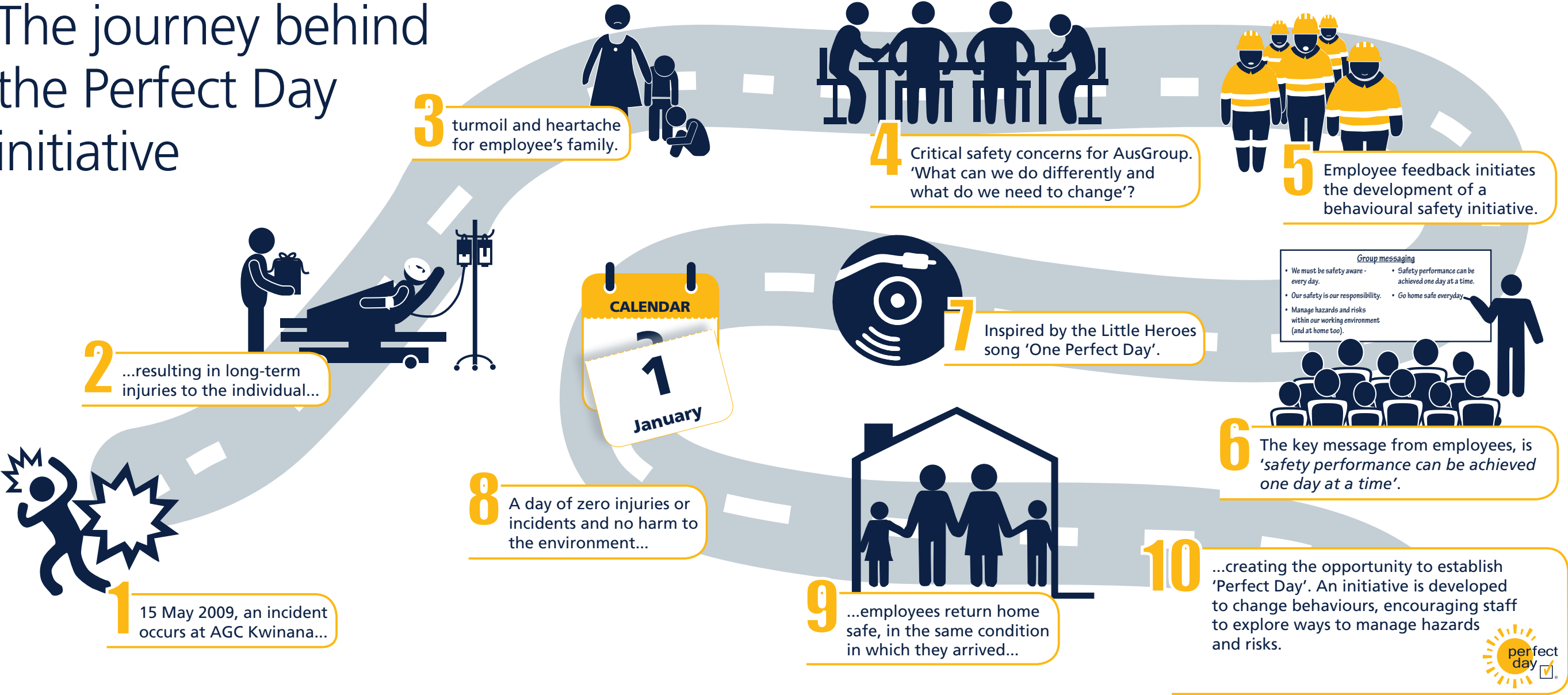
A day when there are zero injuries or incidents, there is no harm to the environment and all of our employees return home in the same condition in which they arrived is the definition of a Perfect Day.



Perfect Day
was created on the
back of a serious
incident which
occurred in
Workshop 3,
Beach Street, Kwinana
on the 15th May 2009.

- Workers opened two large, nine metre high sliding doors to allow for the delivery of large components. This required the chains to be removed to facilitate the width.
- The end stops on the door's guide rail did not function as designed, allowing the door to come out of the rail and stand vertical with no support.
- A change occurred in that the delivery was delayed, so normal work continued.
- While some of the workers were attempting to close the door, a forklift operator drove inside the workshop and exited his forklift to assist them.
- They closed the doors and as the operator walked back to the forklift, the door dislodged and struck him with force on the back of his head and back region.
- The door landed on the forklift which stopped it from falling further and crushing the employee, ultimately saving his life.
- The affect that the serious long-term injuries had on all personnel involved and the turmoil and heartache it caused the employee's family was something the company could not have planned for.

The journey behind the Perfect Day initiative





The Perfect Day initiative was developed from the feedback of our employees, who felt the aspiration of perfect safety performance could be achieved one day at a time. The initiative is designed to change behaviour and allow us to explore more effective ways to manage hazards and risks within our working environments.

Perfect Day promotes awareness that the choices we make at work ultimately impact our families and personal lives.



“There was a shift in the safety mindset when we created Perfect Day. We moved from focusing on statistics and data, to thinking about our individual safety and the safety of the people we were working with, each day.”



Perfect Day was created to personalise everyone's safety and move away from the concept that safety is just another company initiative.

It was created so that employees could relate to the reasons for thinking about safety and what it means to them. The focus is on why we go to work and what's important to us in our time away from work.

It is about taking things one day at a time, being engaged and realising that what we do at work today can have a direct impact on how we enjoy life tomorrow.



The leaders within our business play a critical role in the success of the Perfect Day initiative. They support this through high levels of engagement and encouragement, leading to an immediate and positive impact for employees.

